



How to use anatomy.tv

Thank you for subscribing to **anatomy.tv** from Primal Pictures. Please find below a brief guide to the site to get you started.

Recommended web browsers for using anatomy.tv are Internet Explorer and Mozilla Firefox.

Please note: If you are an Athens or Shibboleth user or wish to access our site from a proxy URL you must provide us with the technical information or refer us to your IT department so we can set you up on our system.

Important:

Please note you may need **to allow pop-ups** in your web browser to view all the content – slides, video clips and other content from links will open in a pop-up window. The process varies from browser to browser but here is a guide for the recommended browsers:

Internet Explorer:

Under “Tools” in the menu toolbar, choose “Popup Blocker”, Choose “Popup Blocker Settings” and enter **www.anatomy.tv**

Mozilla Firefox:

Under “Tools” in the toolbar choose “Options” and click “Web Features” in the left hand column. If the “Block Popup Windows” option is clicked, Click the “Allowed sites” button and enter **www.anatomy.tv** in the textbox and click allow.

ANATOMY.TV
AT THE HEART OF MEDICAL EDUCATION

PRIMAL

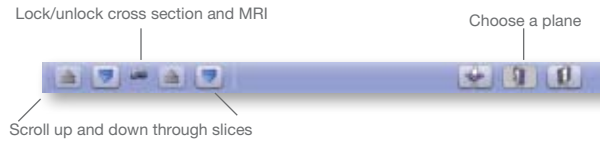
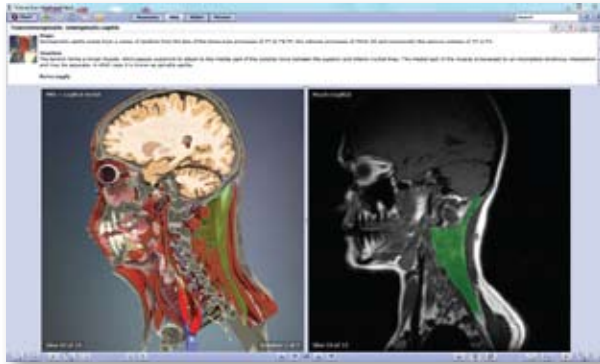


MRI section & Slides

Compare labeled cross sections of our 3D models with equivalent MRI in 3 planes.

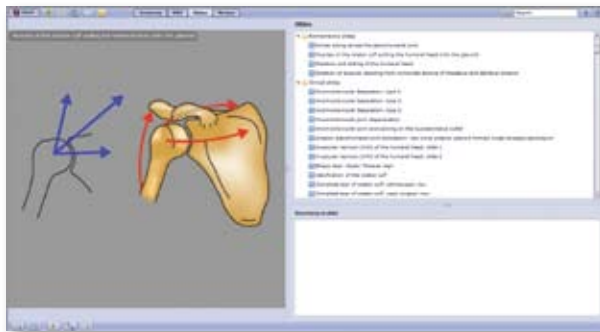
Choose a plane then scroll through all the available layers.

All visible structures are labeled on the cross section plus any that are large enough to see are labeled on the MRI.



Choose a slide from the menu in the top right pane to view it in the viewing pane on the left.

Use the print and save functions at the bottom of the screen to export the image.

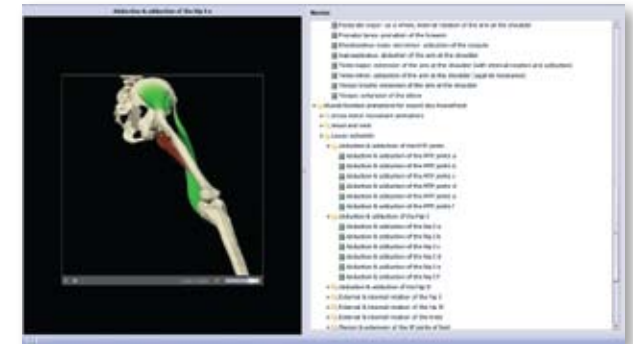


Movies & Animations

Choose a movie clip from the menu in the top right pane to view it.

Play the movie in the viewing pane on the left.

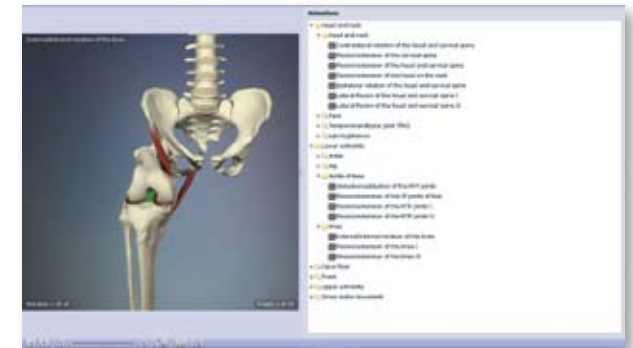
Use the save function to export the clip as a .mpg.



Choose an animation from the menu in the top right pane to view it.

Rotate, label and play the 3D animations.


Use the save function to export the animation as a .mpg.



Printing, saving and use of images

1) Find the 3D image that you want to use.

2) Use the print and save icons for images and text. 

3) If using  save the image in a folder on your hard drive using a convenient title or reference.

The image will save as a .jpg file that can be used in PowerPoint™ and Word™ etc.

EXPORTING VIDEO CLIPS OR ANIMATIONS

Clips can only be saved.

Use the save function to  save the videos and animations as .mpg files.

USE OF IMAGES

NON COMMERCIAL use of the images is royalty free - so for private educational use in PowerPoint presentations, lectures and patient education.

Any **COMMERCIAL OR PUBLIC DOMAIN USE** of the images including in books, websites, videos, DVD's and any other use of the images in the public domain (e.g. advertising) will be subject to **formal permission and an additional license fee** – please contact Primal Pictures with any queries.

Remember: Please ensure you use the **LOG OFF** button to end your session or you may not be able to login again until after the time out period (default time out is 15 minutes).



IF YOU HAVE ANY QUESTIONS PLEASE DO NOT HESITATE TO CONTACT US FOR ASSISTANCE AT techsupport@primalpictures.com