

INTERACTIVE PELVIS AND PERINEUM DVD-ROM – 2009 RELEASE

PRIMAL

A dynamic, digital resource for an in-depth view of the Pelvis and Perineum.

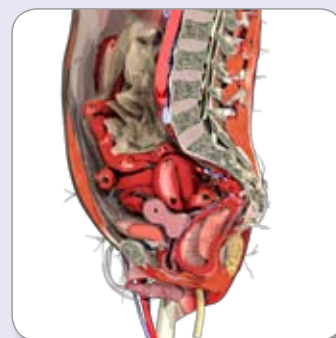
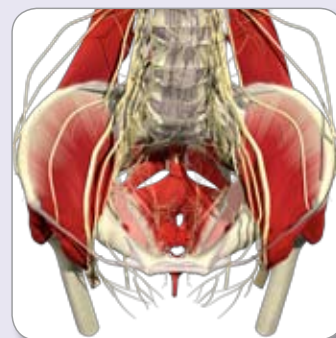
View clear, detailed and accurate 3D modeling of the key anatomy of the Pelvis and Perineum. Choose from a library of highly detailed and labeled views of the pelvic region, including the pelvic contents, median sections and urinary system of the male and female, as well as the rectum, reproductive system, kidneys, surface anatomy, dermatomes, cutaneous innervations and neurovascular details of the female.

The MRI section compares MR slices in 3 planes (axial, sagittal and coronal) with the equivalent slice through the 3D model in up to 15 slices.

View relevant anatomy in a new perspective through interactive and 3D modeling – interactive functions allow you to rotate any 3D model through 360 degrees, add/remove layers of anatomy and label any feature with ease.

Quick and easy access to accurate anatomy, clinical images and text – clicking on any visible structure will bring up relating text and hotlinks to a library of additional images – dissections, clinical slides, diagrams and annotated illustrations.

Make an impression – simple edit functions allow you to export and print any image from the software for use in your own presentations, patient education and student handouts, royalty free.



3D ANATOMY:

Choose from over 20 3D anatomy views - all main views allow you to rotate and add or remove layers of anatomy from the models.

Male:

- Pelvis and Perineum –close up
- Pelvis and Perineum -tumble
- Pelvic contents – main
- Pelvic contents - tumble
- Median section
- Urinary system

Female:

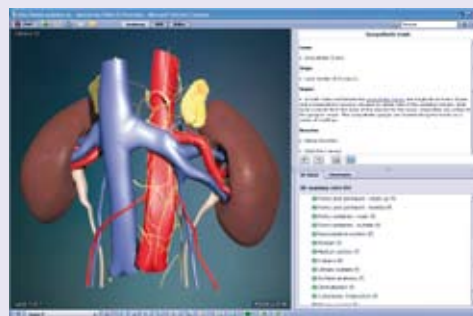
- Pelvis and Perineum – main
- Pelvis and Perineum – close up
- Pelvis and Perineum – tumble
- Reproductive system

- Rectum
- Median section
- Kidneys
- Urinary system
- Dermatomes
- Cutaneous innervations
- Neurovascular

–Bone regions

- Hip bone
- Sacrum
- L5
- S1
- Coccyx

All 3D models are interactive and fully labeled with detailed explanatory anatomy text and links to all relating content within the software.



Head Office

Primal Pictures Ltd

4th Floor Tennyson House, 159-165 Great Portland Street, London W1W 5PA. United Kingdom

Telephone: +44 (0) 20 7637 1010 Fax: +44 (0) 20 7636 7776

MRI SECTION:

Link the 3D model with MRI scans in 3 planes (axial, sagittal, coronal) and move through 15 slices of both the model and MRI.

Slides:

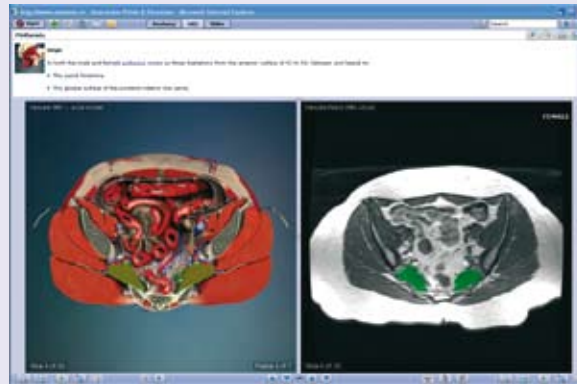
Illustrations – 44

Clinical slides – 73

Dissection slides – 27

Female MRI – 32 (3 planes)

Male MRI – 11 (3 planes)



Authors:

Mr Julian Shah

Alan Farthing, MD, MRCOG

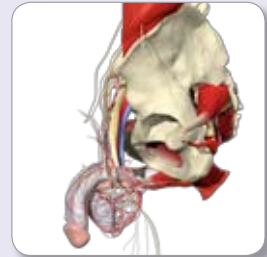
Robert Richardson, BSc

Stan Lennard, MD, ScD

Technical Specification:

PC: Windows 98 and above including Vista

Mac: OS X and above including Leopard.



ISBN: 9781904369929 | Publication date: February 2009

**If you have any further queries regarding the content of this DVD-ROM,
please contact us emma@primalpictures.com**