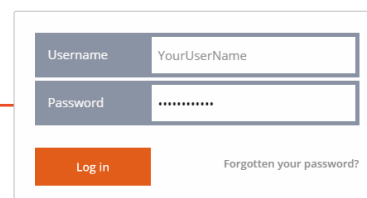
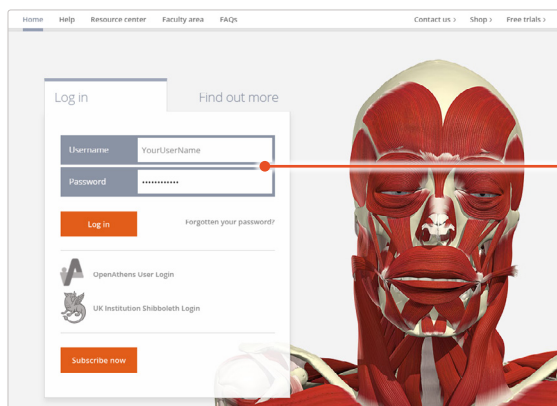


iPad – individual subscribers

DOWNLOADING THE APPS

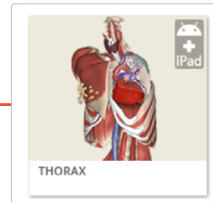
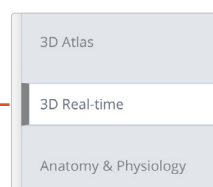
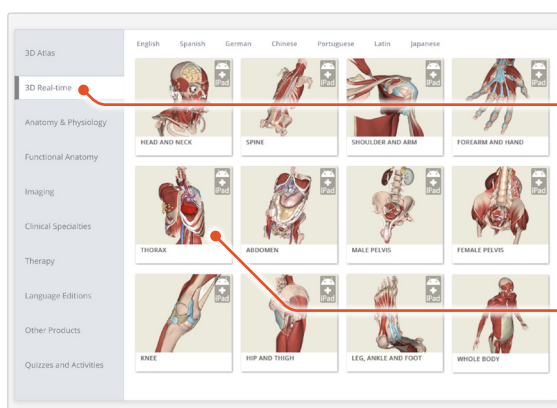
1

Login to **anatomy.tv**



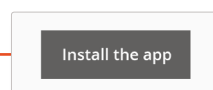
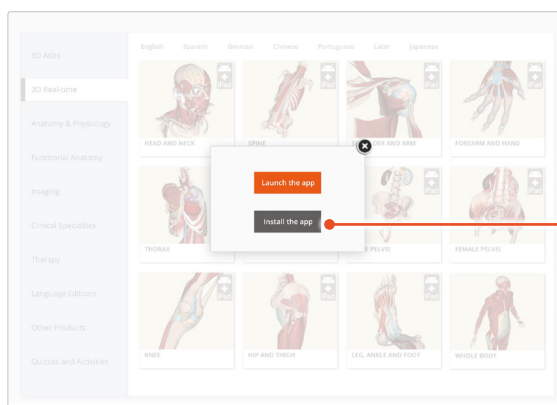
2

Select **3D Real-time** and the region of your choice.



3

When prompted select **Install the app**.

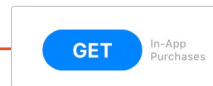
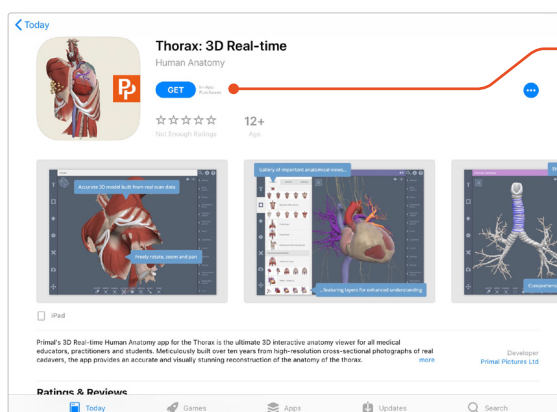


4

This will open the app in the App Store. Select **GET**, then **INSTALL** to download the app.

Remember there are 11 individual apps to download in the series.

You can also find the apps by searching for **3D Realtime Human Anatomy** directly in the App Store.

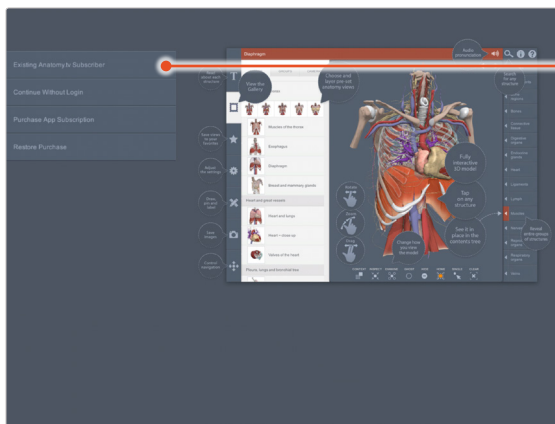


iPad – individual subscribers

LOGGING IN TO THE APPS

5

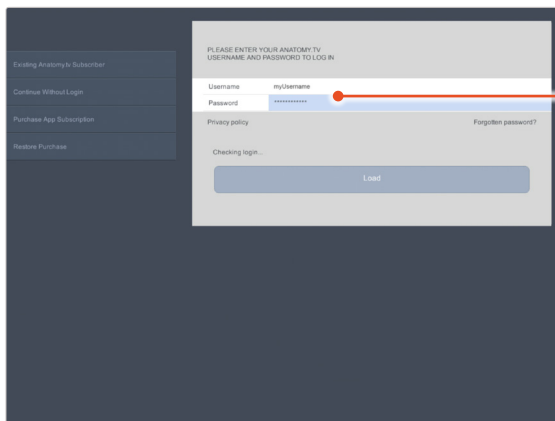
Select **Existing Anatomy.tv subscriber.**



Existing Anatomy.tv Subscriber

6

Enter your anatomy.tv **username** and **password**.



Username	myUsername
Password	*****

7

Once the product has loaded you will see the QuickStart screen – tap anywhere to access the Real-time interface.

You will remain logged in as long as the app is active.

However, if you minimise the app or your iPad goes to sleep for more than 30 minutes, you will be required to reconnect to the internet and log back in.

When you relaunch the app, simply re-enter your password to log back in.

