

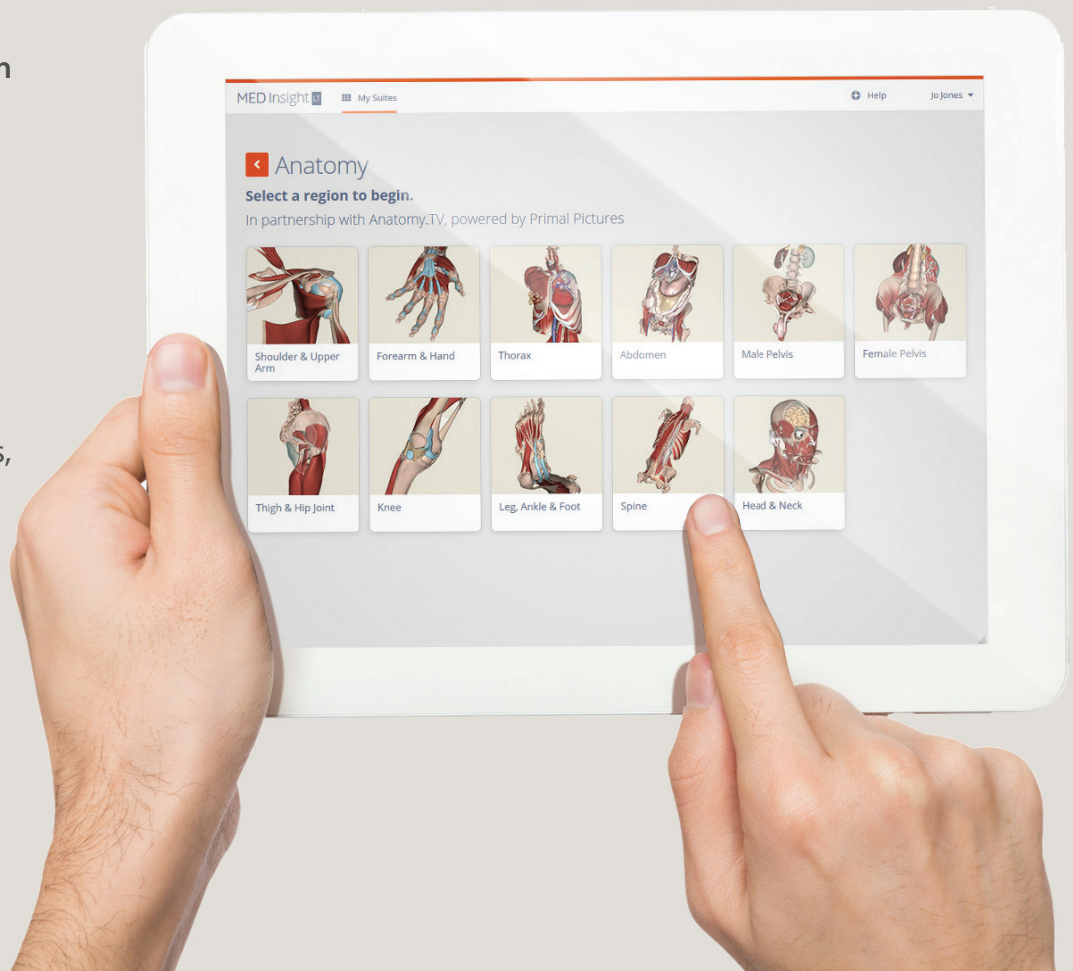
## Primal Pictures Anatomy PALMs

The ultimate adaptive assessment tool for learning on the go

Increase knowledge retention, improve learning speed, and continuously assess student progress with scientifically-proven Perceptual and Adaptive Learning Modules (PALMs).

**User-focused learning modules scientifically proven to produce better outcomes than traditional learning methods, Anatomy PALMs:**

- Maximizes student engagement with a game-like interface
- Serves content based on each student's ability, needs, and learning style
- Includes assessment tracking tools allowing faculty to proactively evaluate groups or individuals
- Combines research-proven learning techniques with Primal Pictures' best-in-class content



“ These modules were tremendously helpful for me. I found it very helpful to see multiple presentations of everything in order to get the broad scope of what I was learning. Additionally, the format of the program was fun and interactive in a way that kept me engaged while pushing me to improve. ”

**PALMs user, David Geffen School of Medicine**

Visit [www.primalpictures.com/anatomypalms.aspx](http://www.primalpictures.com/anatomypalms.aspx) to learn more about PALMs



The Anatomy learning and assessment tool students will reach for again and again!

## What is PALMs?

PALMs is Primal's interactive and adaptive online learning and assessment tool. PALMs combines research-proven learning techniques with the most medically accurate 3D models of human anatomy available to measurably improve student learning – regardless of learning style.

Developed using research by renowned academic cognitive psychologists at Insight Learning Technology Inc. PALMs is powered by patented technology that reinforces comprehension and understanding of the essential anatomy concepts presented in Primal Pictures' 3D best-in-class human anatomy models.

Best of all, PALMS is accessible via any device for learning on the go!

### Flexible, engaging and user-focused content delivers better outcomes:

**BRIDGES THE GAP** between knowledge-based understanding and experience-based performance, ensuring deep comprehension and retention.

**ACCESSIBLE** 24/7 via any device for convenient learning on the go making PALMs the ultimate learning and assessment tool.

**ELEVEN LEARNING MODULES** covering regional anatomy allows students to focus on the content they need to know and assess their progress as they go.

**RESEARCH-PROVEN** perceptual and adaptive learning techniques and engaging interactive format.

**ADJUSTS** to each learner using analytical techniques to deduce what they do and do not know, allowing students to master specific concepts for deeper understanding and greater retention of required anatomical knowledge.

**AVAILABLE** as a stand-alone resource or supplement to your Primal Pictures license.

For information on how PALMs anatomy learning and assessment modules can increase engagement and improve learning outcomes at your institution, please contact your Primal Pictures account manager today.

Request a free trial today by visiting: [www.pharma.intelligence.informa.com/primalpict-palm-lp](http://www.pharma.intelligence.informa.com/primalpict-palm-lp)